



DROMEAS

REFLEX

Ergonomic 3D back

Anatomical frame made of shaped and welded steel profiles, The frame is connected through special connectors to the outer back which is made of polyamide.

Adjustable 2D headrest

Made of thermoplastic material. Upholstered with the same fabric of the seat

Back upholstery

Available in net, fabric and leather

Adjustable arms

Made of thermoplastic polyamide with height adjustment (70mm). In addition, they have a width adjustment, which is estimated at 395-450mm.

The contact surface of the arms is made of molded polyurethane of medium hardness for greater comfort and ergonomics. It can be rotated $\pm 15^\circ$ and can be moved back and forth in 6 positions

Sliding seat

Ergonomically designed sliding seat. Possibility of stabilization in 7 positions. Made of thermoplastic polyamide with molded polyurethane foam cushion

Base

Five star base 660mm, made of die-cast aluminum electrostatically painted or polished

Synchro mechanism

With the possibility of stabilization in 5 positions, anti-panic system and adjustment to the user's weight through a tilt adjustment rotor. Allows synchronous tilt of the seat by 11° and the backrest by 22°

Twin wheels / Anti-slip soles

The wheels are twin made of reinforced thermoplastic material (polyamide). Fixed soles are optionally placed instead of the wheels



<https://www.dromeas.gr/>

Ergonomic 3D backrest:

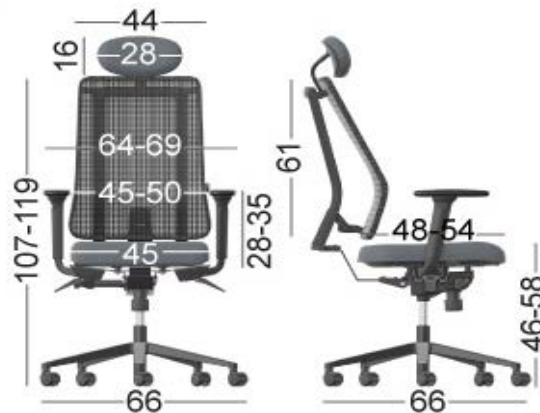


Anatomical design of the back according to the ergonomics standards EN 1335, offers complete comfort to the user as he follows the movements of the body right, left, front and back during his work.

The synchro mechanism with the anti-panic function adapts the seat to the user's weight making it comfortable and relaxed even during long hours of work.

Dimensions:

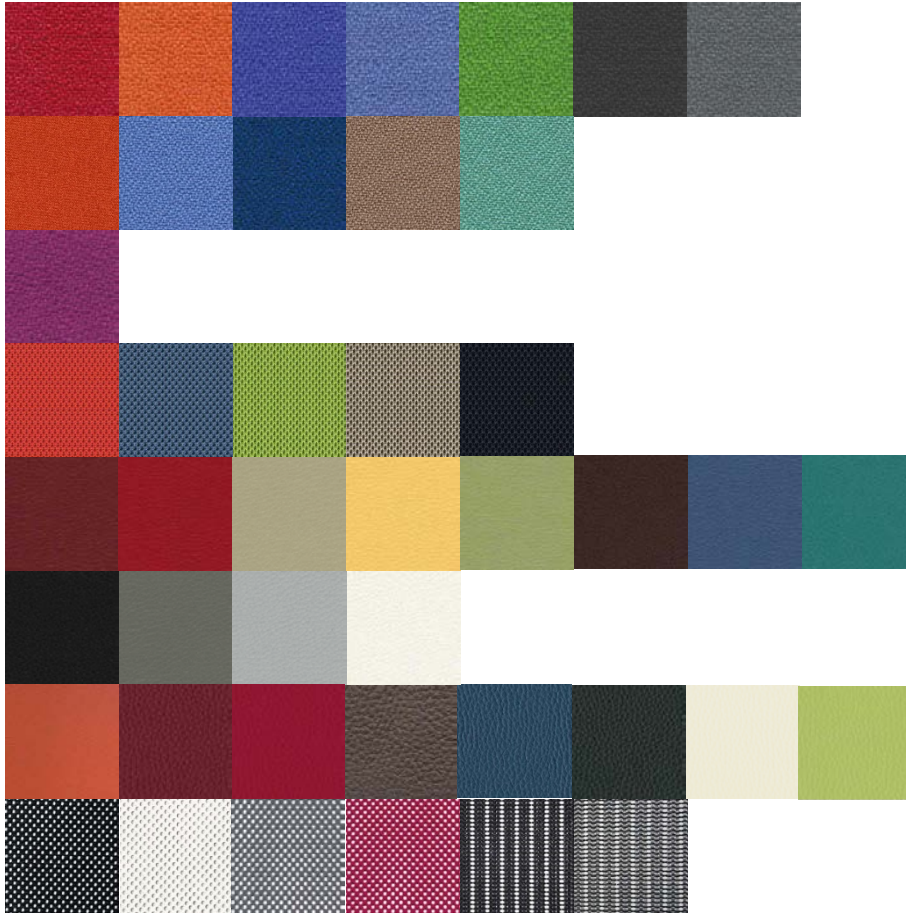
Weight: 23 kg





DROMEAS

Color chart:



Certificates:

- EN 1335-1:2000
- EN 1335/AC:2002
- EN 1335-2:2009
- EN 1335-3:2009
- DIN 4550 / 12.04



<https://www.dromeas.gr/>